



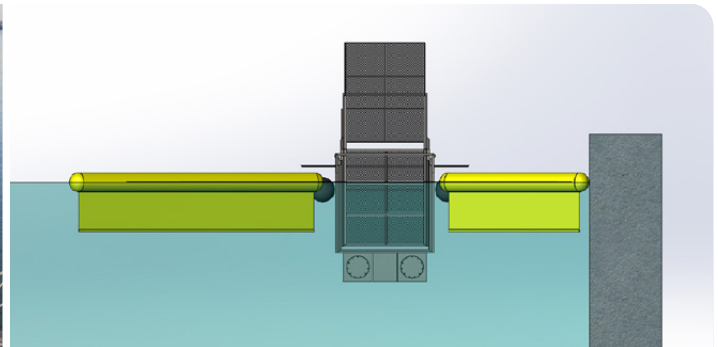
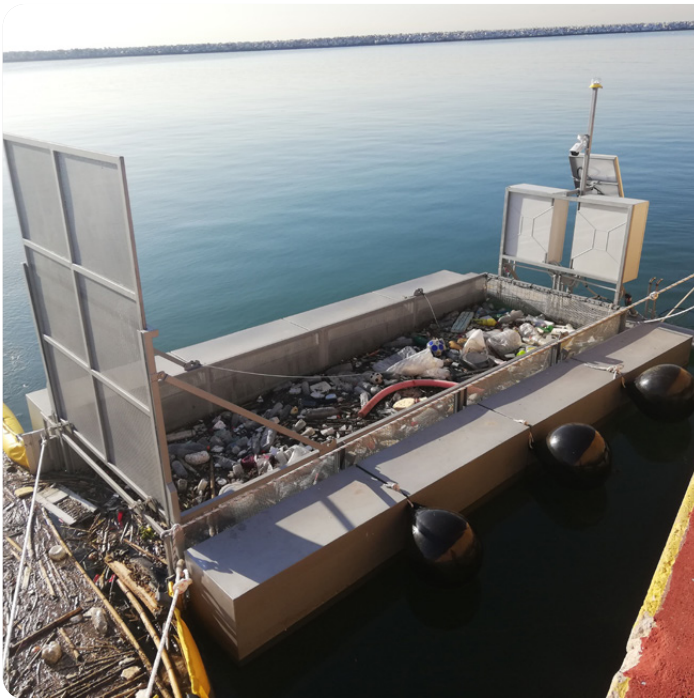
Litter Management
Boom Storage

CLEAN TRASH



New Naval

The CLAIM's Litter Entrapping Autonomous Network Tactical Recovery Accumulation System Hellas (CLEAN TRASH) is an unparalleled and highly efficient solution to manually manage and remove marine litter from river mouths and other areas that can be impacted by marine litter such as dams, water channels, marinas, ports etc. The system has a high capacity storage design, for up to 890 kg of debris, with multiple levels that alternate when one is full. A boom arrangement controls, guides and manages materials to a containment cage where they are collected, contained and stored before removal. The system collects macro-litter (down to 5 mm) and greater. Scalable systems are designed to the installation environment, combining innovative technology and strategic arrangements.



TECHNICAL SPECIFICATIONS

| | |
|-------------------------|--|
| Capacity | 300 - 890 kg |
| Compartments | up to 3 |
| Dimensions (LxWxH) | 5.8 mm x 3.1 mm x 4.6 mm (or custom) |
| Weight | 1535 kg (Empty) |
| Storage Levels | 3 |
| Frame | Epoxy Coated Mild Steel or Stainless Steel |
| Power | 220V |
| Power / Height Pumps | 4 x 12V* |
| Height Position Sensors | 2 |
| Boom type | Dependent upon installation |

*if applicable

TECHNICAL DATA

Height regulating floats position the containment cage by utilize salvage technology to move the storage level. Independent remote-control system for changing storage levels, online video monitoring and real-time information viewing. The system can be powered with alternative energy sources (solar, wind or hydro power). On-board power storage including stand-by options. Optional addition of scientific instruments for data collection; current meter, salinity meter, depth sounder, etc.

KEY FEATURES:

- Heavy duty containment boom for litter guidance
- 3 levels of interchangeable collection chambers which alternate when full, utilizing salvage technology
- Remote control and surveillance
- Ideal for long-term use in a variety of environments

SYSTEM COMPONENTS:

- Floating base platform
- Internal, removable containment cage
- Electronic system
- Outer boom, J-formation
- Inner boom

EQUIPMENT OPTIONS:

- High visibility, solid filled boom with reflectors and marine lights
- Anchoring set
- Tidal compensator