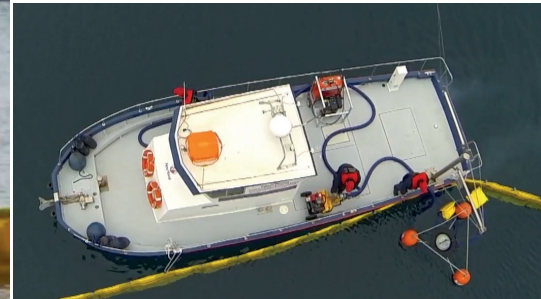


# Seaguardian 9.10 Response & Recovery Vessel

## VESSEL FEATURES

- Rapid response vessel
- Designed for oil spill response and support operations
- Storage and oil dispersant tanks
- Designed to deploy oil spill response equipment and tow/manage equipment during response operations
- Stern deck outfitted to hold oil spill response equipment



The Seaguardian 9.10 Response & Recovery Vessel is a high-speed craft designed to act as a support vessel to oil spill response and salvage operations. Her speed minimizes the time of the response from the initial call-out. A square shaped stern with internal reinforcements and stainless steel connection points enable towing operations of booms and skimmers. A flat stern deck is furnished with attachments for the installation of response equipment. A bow platform provides access to the perimeter of the vessel. The vessel is built with a shallow draft allowing it to operate in both nearshore and offshore environments.

- The vessel is driven by dual 200 HP engines
- The Vessel is equipped with 3000 l storage tanks
- An oil dispersant tank works in unison with optional spray arm systems such as the ScorSpray Oil Dispersant Spray Arms
- The hull is constructed of heavy-duty Glass Reinforced Plastic (GRP)
- The vessel is built for oil spill response operations and emergency response; able to support larger supply Vessels in U/J Boom configurations and can also be used in Chemical Dispersant Spraying operations
- The vessel is easily transported by trailer

## TECHNICAL SPECIFICATIONS

|                                 |                                |
|---------------------------------|--------------------------------|
| Length (LOA)                    | 9.90 m                         |
| Beam (Molded)                   | 3.30 m                         |
| Recovered Oil Storage Tanks     | 3000 lt                        |
| Operational Speed (min. - max.) | 1 – 19 knots                   |
| Hull Material                   | Glass Reinforced Plastic (GRP) |
| Hull Type                       | Monohull                       |
| Engines                         | 2 x 200 HP                     |

## EQUIPMENT OPTIONS

- Deck Crane
- Electric Generator
- Radar/GPS/Echo Sounder/Etc.
- Personnel Accommodation
- Trailer for Road Transportation

## OPERATIONAL CAPABILITIES

- Oil Spill Response Support
- Boom Deployment/Towing Operations
- Skimmer Deployment & Recovery
- Dispersant Application
- Recovery Storage
- Salvage Operations/Emergency Support

