



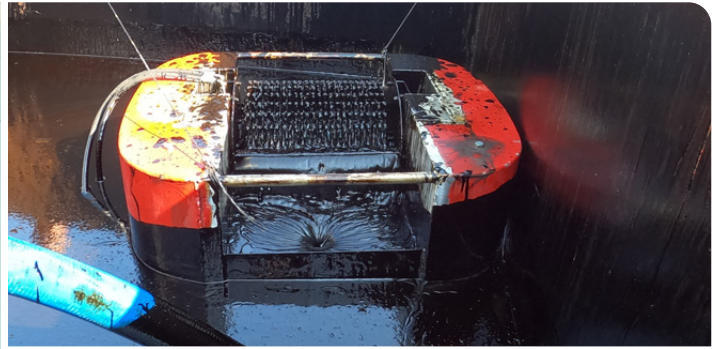
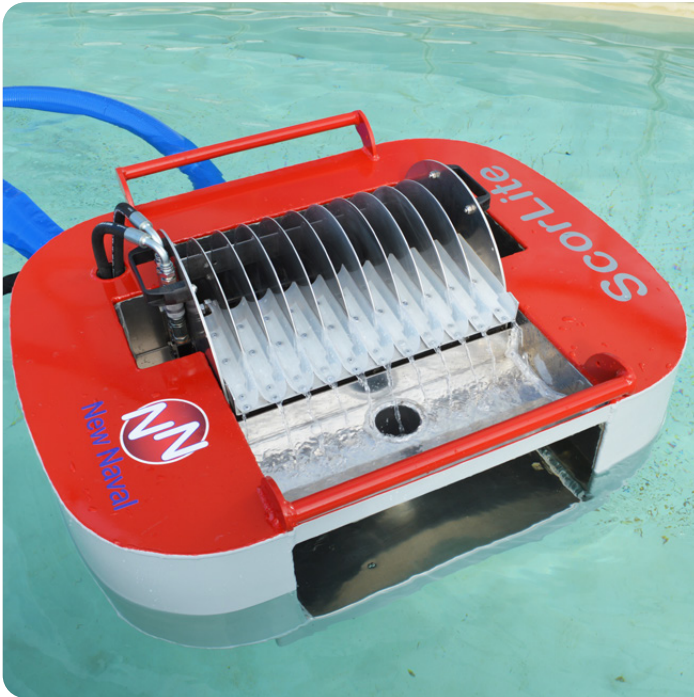
Oil Spill Recovery Skimmer
Brush/Disc/Drum Recovery System

ScorLite



New Naval

The ScorLite is an oleophilic, free-floating skimmer designed for oil recovery operations in varying environments and scenarios. The modular system allows fast interchange from brush, to disc or drum recovery bank depending on the viscosity of the target oil. Proven oleophilic technology allows the system to achieve oil recovery rates of up to 99%. The light-weight system is easily and quickly assembled, deployed and operated in emergency operations. Designed with a shallow draft for portability, the skimmer is effective in operations from inland environments to nearshore applications.



TECHNICAL SPECIFICATIONS

Nominal Recovery Capacity (1x Brush Recovery Bank)	Up to 30 m ³ /h
Certified Max. Recovery Rate (1x Brush Recovery Bank) (According to ASTM F2709 – 15)	Up to 54 m ³ /h*
Certified Max. Efficiency (According to ASTM F2709 – 15)	99%
Dimensions (LxWxH mm)	1000 mm x 915 mm x 506
Weight (with Brush Module)	42 kg
Draft	200 mm
Skimmer Frame	Marine Grade Aluminium
Discharge Pump	Remote
Discharge Connection	2" or 3" Camlock
Hydraulic Flow Rate	3 lpm
Hydraulic Pressure	90 bar
Hydraulic Connections	3/8"

*Depending on Oil Viscosity & Sea State Conditions

TECHNICAL DATA

Compact in size, requires minimal space for storage and transportation, is easily deployable by hand, yet it is capable of recovery rates up to 54 m³/h. The system is hydraulically driven with low power requirements and quick-couplings that can be easily connected to a dedicated power pack or directly to the vessel's hydraulic system if available. Built with highly durable materials including a marine-type aluminium frame. Highly resistant to oil, dispersants and seawater.

KEY FEATURES:

- Modular system with interchangeable recovery banks (brush, disc and drum banks) for light to heavy viscous pollutants
- 99% oil, <2% water content brush recovery bank capability
- Light-weight system, easily transported and deployed
- Extremely shallow-draft designed for nearshore, port and harbour recovery operations
- Optional external floats for open sea operations

SYSTEM APPLICATIONS:

- Nearshore
- Inland Waters
- Ports & Harbours

EQUIPMENT OPTIONS:

- 7.5 kW Power pack
- Transfer Pump
- Hydraulic hoses
- Transfer hose
- Spare parts kit